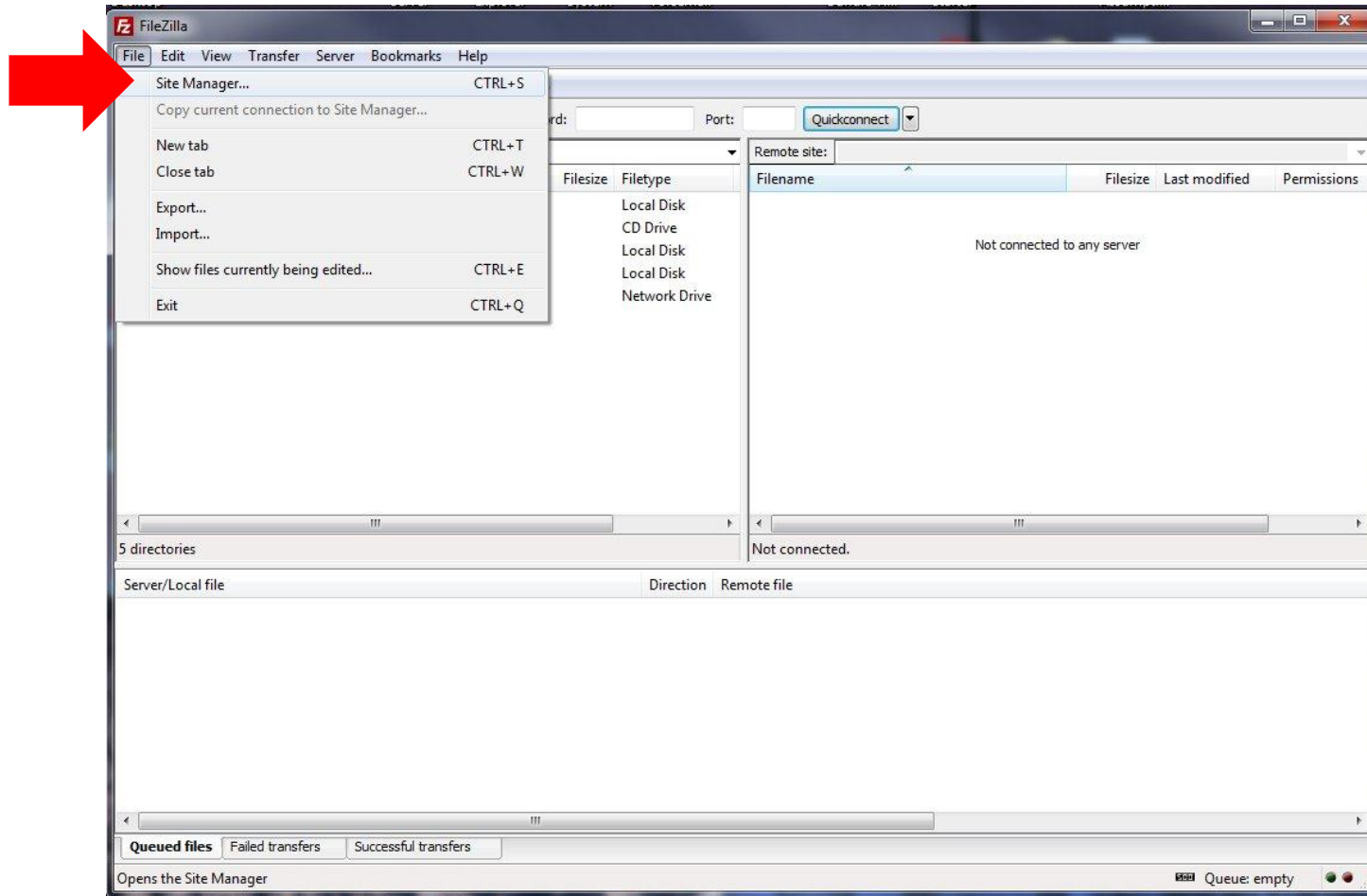


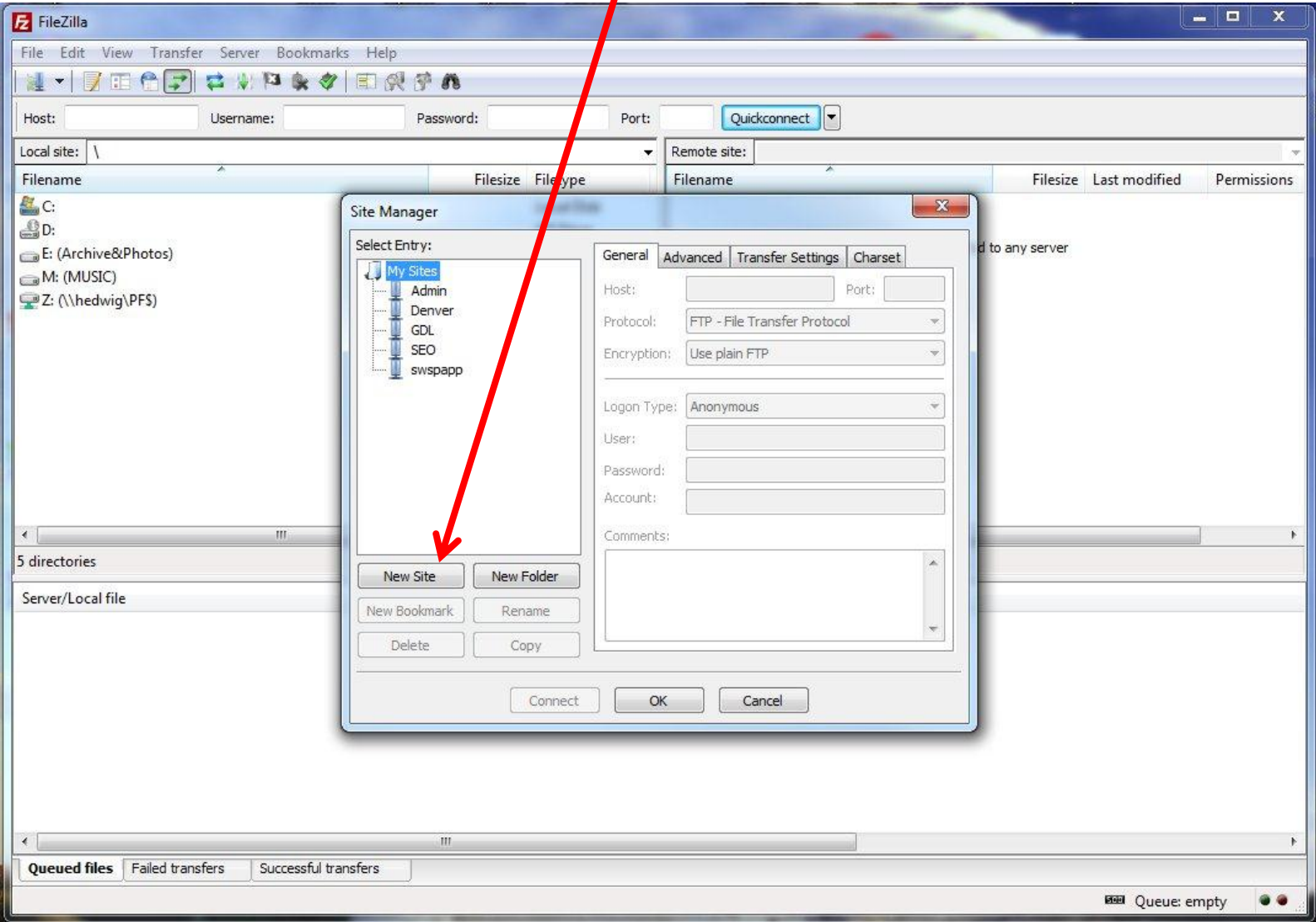
FILEZILLA SETUP AND USE INSTRUCTIONS

Filezilla is a good way to handle uploading or downloading more than one file at a time.

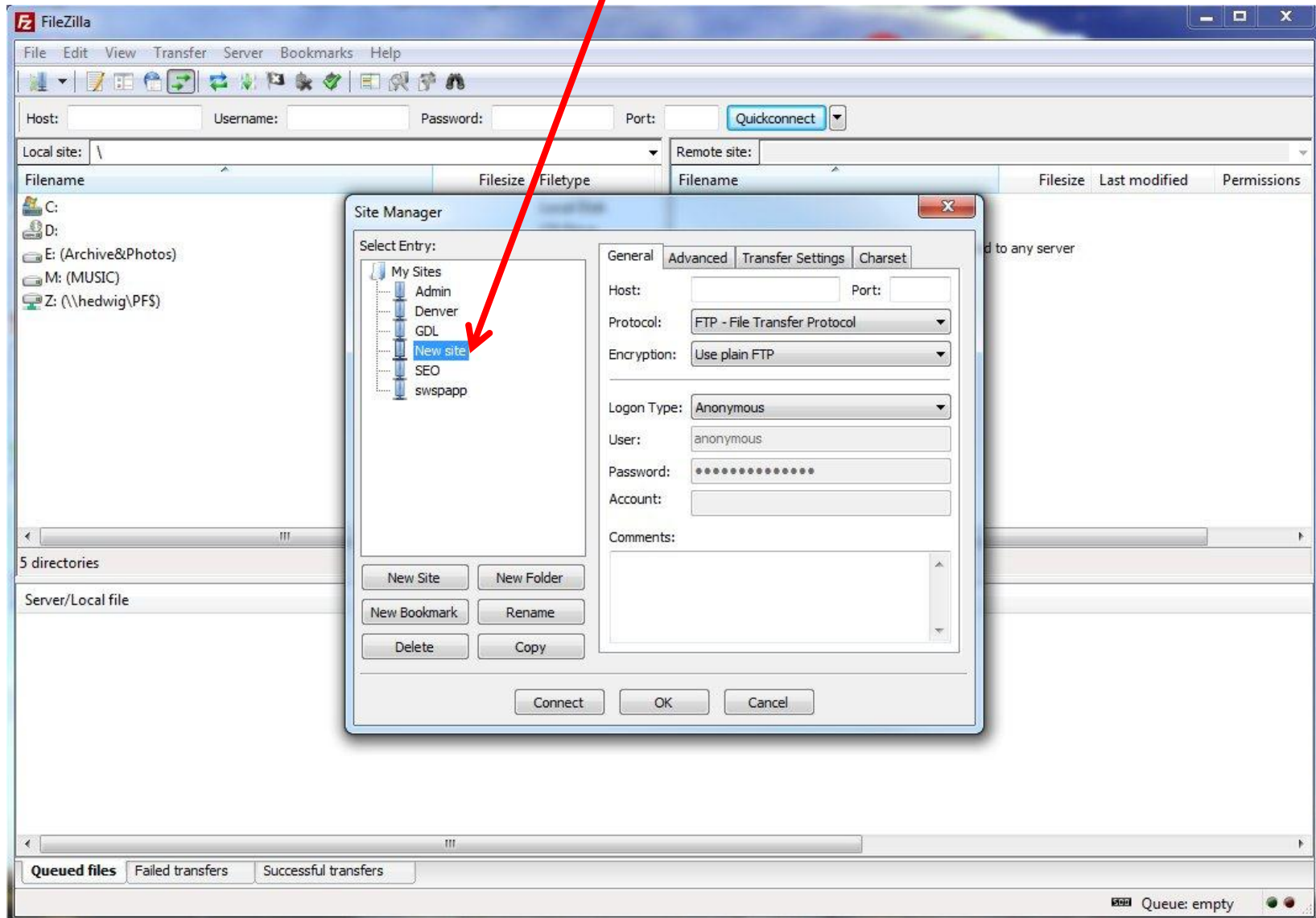
1. Install Filezilla if you don't have it installed. You can download it from filezilla-project.org
2. Once installed, open Filezilla
3. Click *File, Site Manager*



4. When Site Manager opens, click *New Site*



5. Give the site a name (i.e., WWE)



6. Fill-in the boxes on the right.

Host: ftp.wrightwater.com

Port: leave blank

Protocol: FTP-File Transfer

Protocol

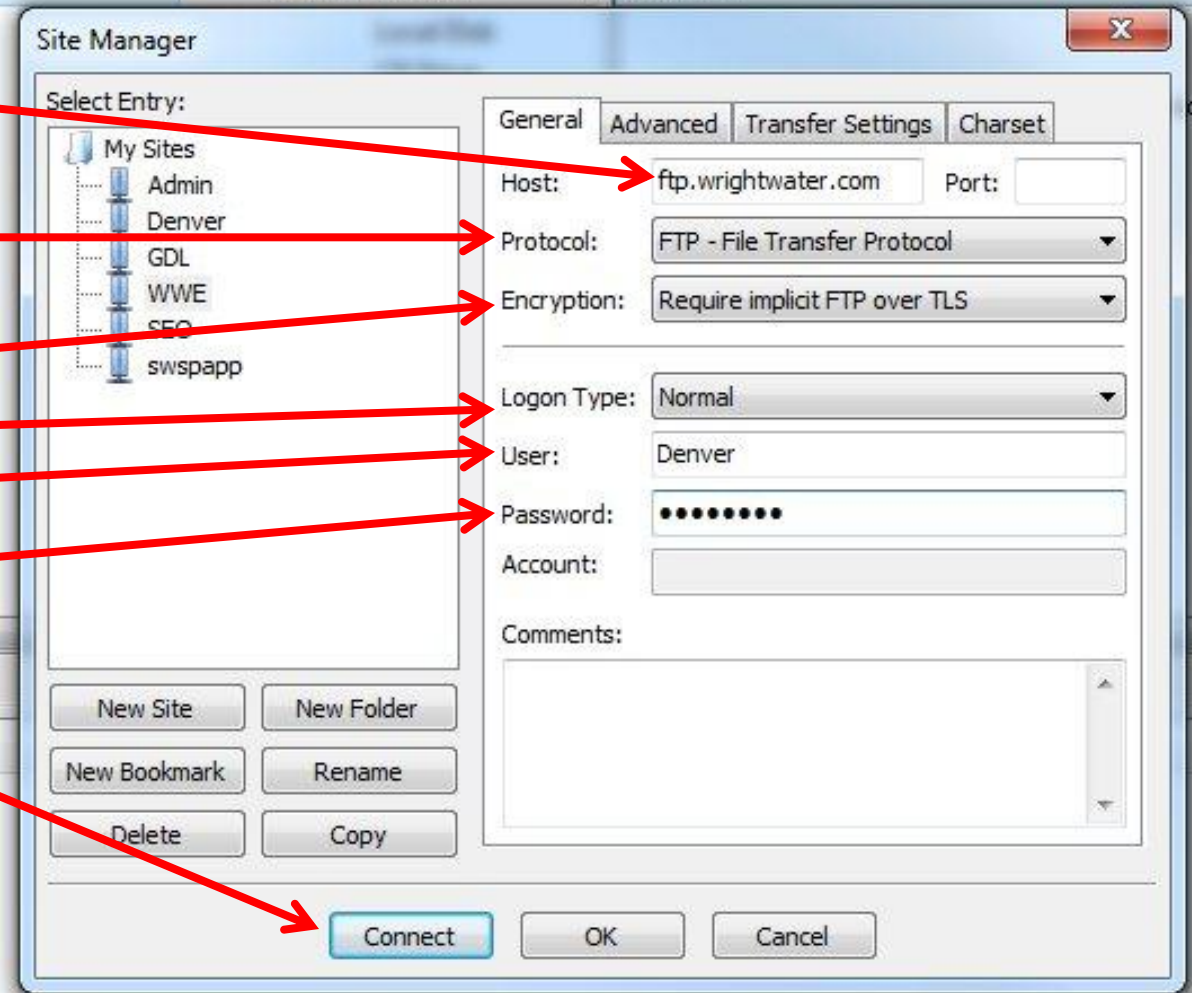
Encryption: Require implicit FTP
over TLS

Logon Type: normal

User: Type user name

Password: Type the password

7. Click Connect



NOTE: The user name and password are case sensitive and must be typed carefully.

NOTE: The first time you use Filezilla you will have to accept a security certificate. If you check the box in the lower-left corner of the window, you will not have to accept it again.

8. Once you have created a site, it is automatically saved when you click Connect. You can click the pull-down icon to see a list of your sites. Selecting a site from the list will connect you.

